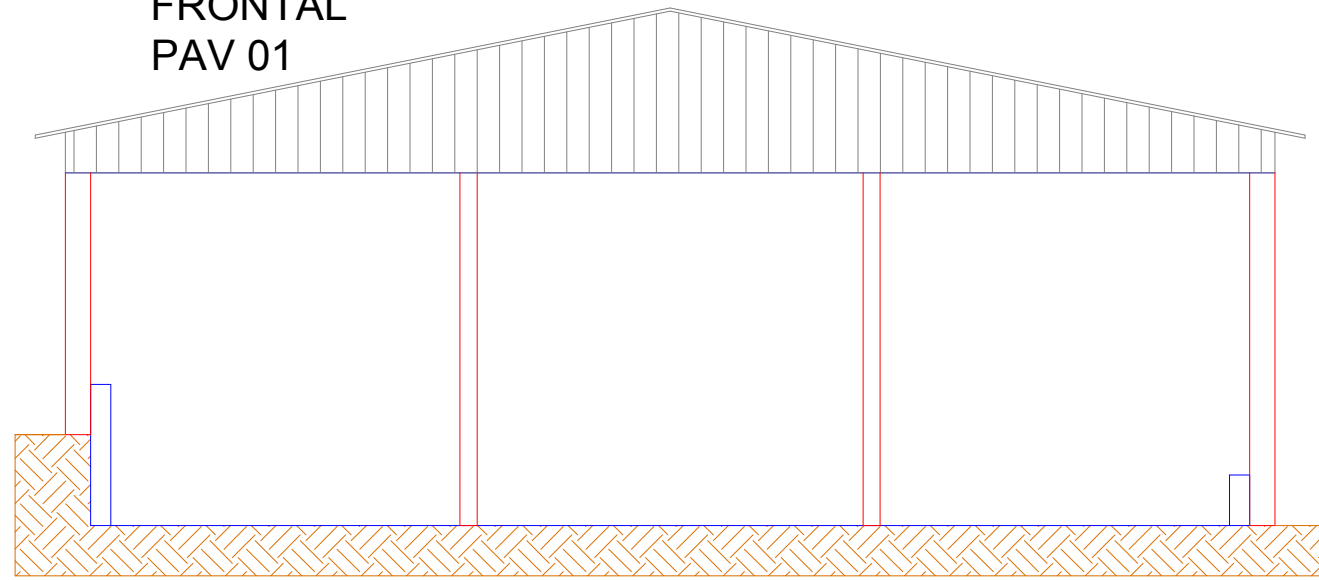
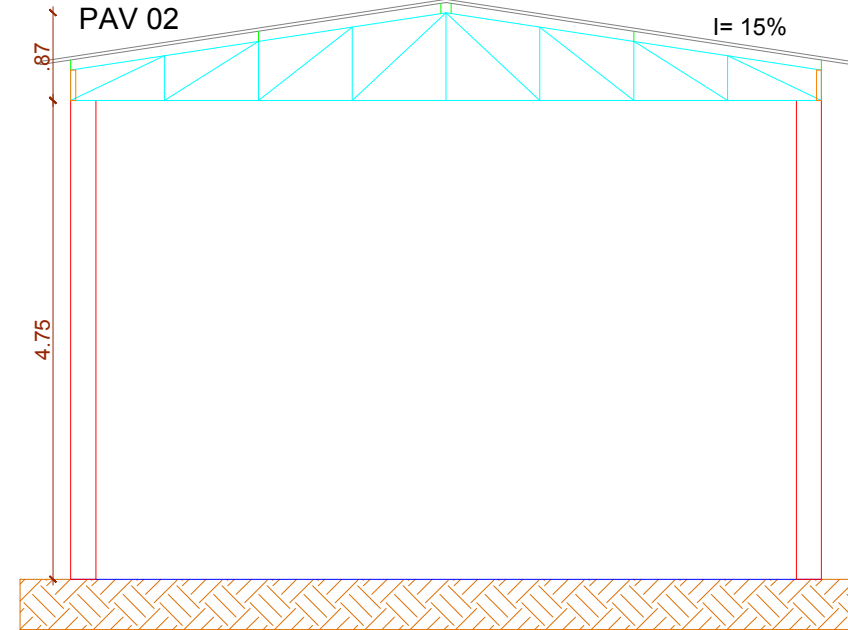


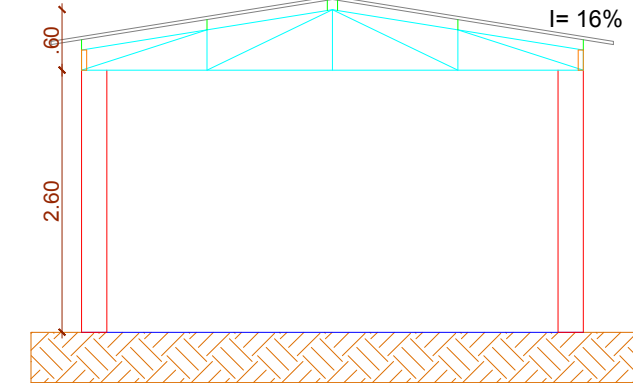
FACHADA
FRONTAL
PAV 01



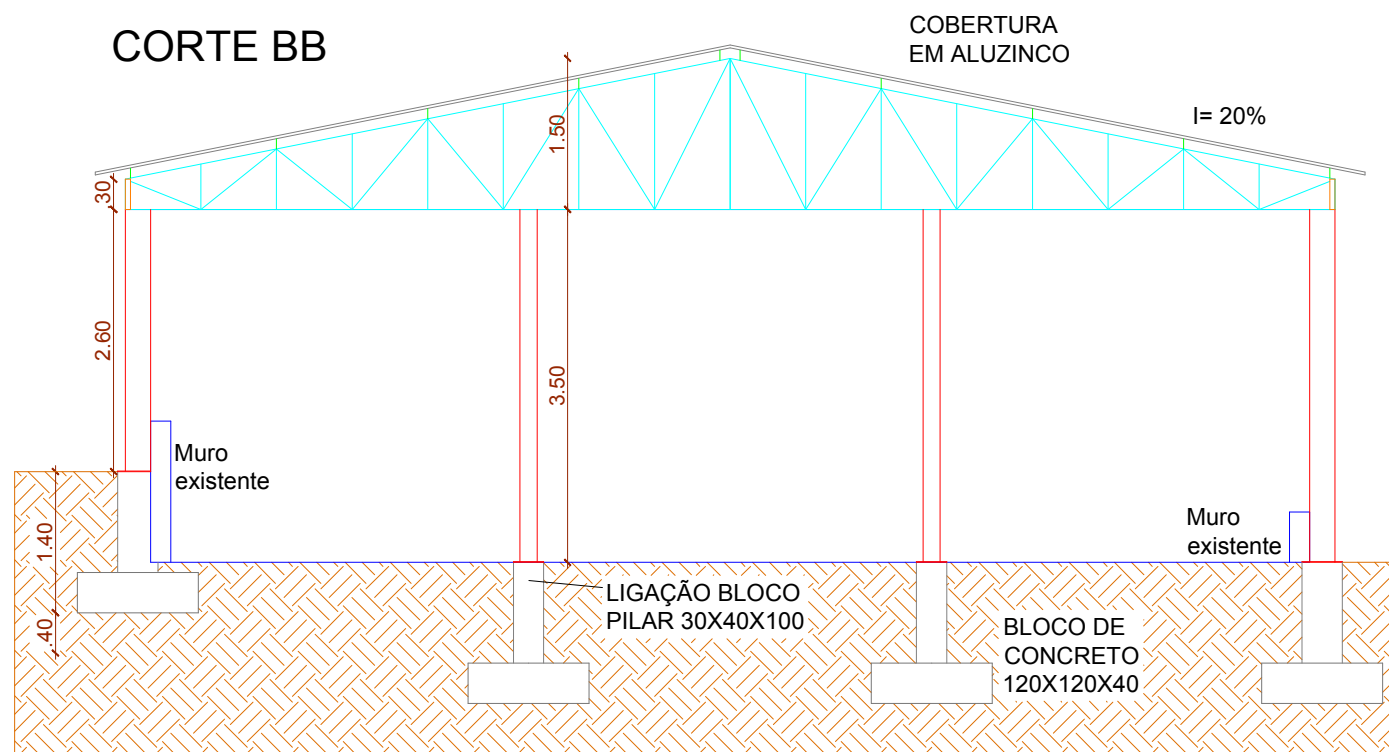
FACHADA
FRONTAL
PAV 02



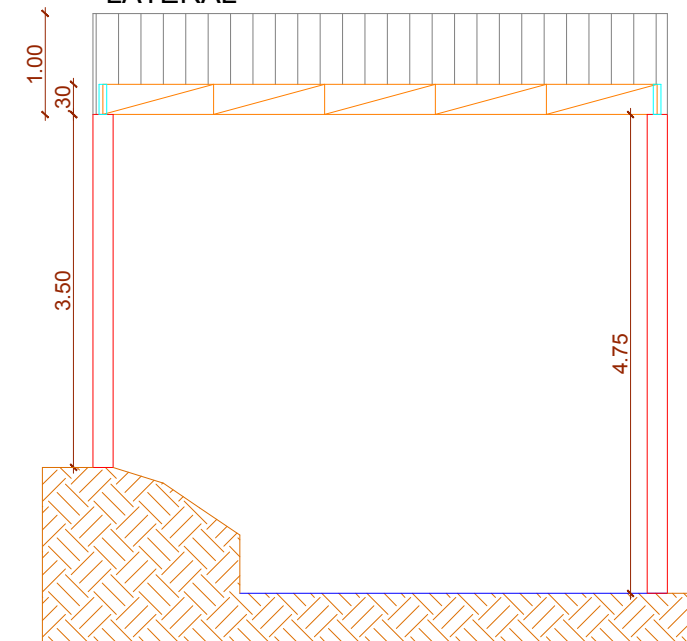
FACHADA
FRONTAL
PAV 03



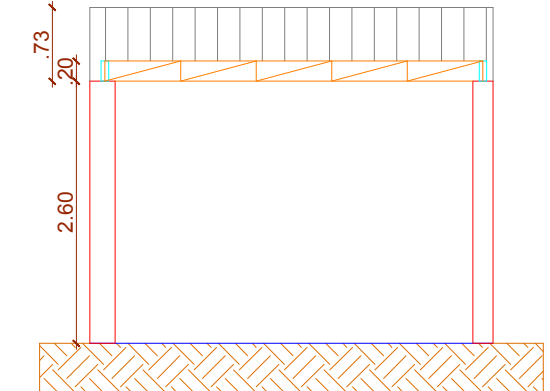
CORTE BB



FACHADA
LATERAL



FACHADA
LATERAL



PROJETO: CRISTINA DALBOSCO GUAREZI
ENGENHEIRA CIVIL CREA/RS 097.707-D

PROJETO: ESCOLA JAIR DE MOURA CALIXTO

LOCAL: TRAVESSA MIGUEL DE PAULA PEREIRA,
NONOAI/RS.

ASSUNTO: FACHADA E CORTE

TIPO DE PROJETO: ARQUITETÔNICO

DATA: MARÇO/2022

ESCALA: S/ESC

NÚMERO:

03